

Elacin SoloCom

In noisy environments, hearing protection often constitutes an obstacle in using any means of electrical communication such as a telephone. Incoming calls are often not heard, and when they are heard, hearing protection equipment is usually a hindrance during conversation. Result: the user removes the hearing protection, and thereby the protection is nullified. To resolve this problem, the SafeSound • SoloCom ensures a user will not miss an incoming call and will be able to have a conversation without removing the hearing protector. This provides uninterrupted hearing protection.



An extraordinary feature that the SoloCom comes equipped with is an integrated sound filter. There is a choice of three filters; when used in combination with one of the four SafeSound filters, the degree of attenuation can be tuned to the ambient noise level. These features prevent over attenuation while optimising perceived sounds.

The Elacin SoloCom can be connected to a two-way radio (via handset). The SoloCom Radiophone (RP) is only provided with a speaker for connection to a handset.

Together, the SoloCom and SafeSound combination protects the user optimally against background noise. However, the SoloCom's sound level is not limited. It therefore stands to reason that the SoloCom should not be used for extended periods if the user was to listen to MP3 music on their cell, for instance.

Filters

Depending on the noise level there is a choice of four filter combinations^{*)}:

- AT25 filter + Elacin RC19 filter
- AT23 filter + Elacin RC18 filter
- AT23 filter + Elacin RC17 filter
- AT20 filter + Elacin RC15 filter

^{*)} See also SafeSound.

Application of use

- Safe communication in the workplace, without having to take the hearing protection out of the ear.
- Access to wireless communication in a noisy (work) environment.
- Anyone who wants to combine hearing protection and communication.

Suitable for use in

The Elacin SoloCom is designed to provide maximum communication in work-related (crisis) situations. E.g. in industrial environments, construction, assembly and carpentry companies, shipyards, emergency services and security.

Benefits

- From hearing protector to communication possibility in one operation
- For combination with two-way radio or mobile phone
- Maximum speech intelligibility especially in crisis and/or noisy environments
- Fits perfectly when mobility is important

Attenuation values (EN352-2) TP and RP

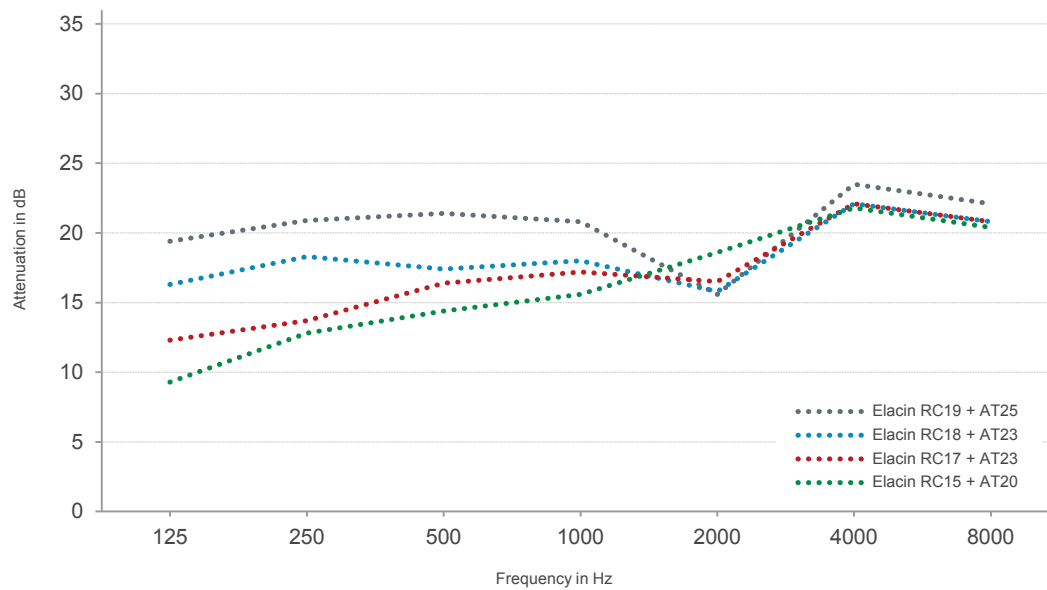
f in Hz		125	250	500	1000	2000	4000	8000	H	M	L	SNR
Elacin RC19 + AT25	APVf [dB]	19,4	20,9	21,4	20,8	15,6	23,5	22,1	18	19	20	21
Elacin RC18 + AT23		16,3	18,3	17,4	18,0	15,8	22,1	20,8	18	18	18	20
Elacin RC17 + AT23		12,3	13,7	16,4	17,2	16,5	22,1	20,8	18	17	15	19
Elacin RC15 + AT20		9,3	12,8	14,4	15,6	18,6	21,8	20,4	19	16	14	19

f in Hz		125	250	500	1000	2000	4000	8000
Elacin RC19 + AT25	Mf [dB]	23,2	23,3	24,0	23,3	20,1	26,1	26,5
Elacin RC18 + AT23		19,4	20,6	20,7	20,4	20,0	26,8	25,9
Elacin RC17 + AT23		14,5	15,9	18,9	19,3	19,9	25,3	25,9
Elacin RC15 + AT20		12,6	14,5	17,1	18,3	22,1	26,1	25,5

f in Hz		125	250	500	1000	2000	4000	8000
Elacin RC19 + AT25	Sf [dB]	3,8	2,4	2,6	2,5	4,5	2,6	4,4
Elacin RC18 + AT23		3,1	2,3	3,3	2,4	4,2	4,7	5,1
Elacin RC17 + AT23		2,2	2,2	2,5	2,1	3,4	3,2	5,1
Elacin RC15 + AT20		3,3	1,7	2,7	2,7	3,5	4,3	5,1

Attenuation curve

Elacin SoloCom



Elacin SoloCom Radiophone

Equipped with a speaker for connection to a handset / Push-to-Talk unit.

Technical specifications

1. SafeSound hearing protector
2. Elacin SoloCom earphone
3. Sound filter
4. Shirt clip
5. Connector

Electrical data (EN352-6)

Elacin SoloCom RP	
Input [mV]	41
Output [dB(A)]	82

